

Mamas & Papas Medley

Monday Monday

Folk Rock ♩ = 105-110

Amy Jo
Tamara
Erin

1

Ba da ba da da__ da Ba da ba da da__ da Ba da ba da da__ da

Detailed description: This block contains the first six measures of the medley. The music is in 4/4 time with a key signature of three flats (B-flat, E-flat, A-flat). The melody consists of eighth and quarter notes, often beamed together. The lyrics are 'Ba da ba da da__ da' repeated three times.

7

Ba da ba da da__ da Ba da ba da da__ da Ba da bada da__ da da__

Detailed description: This block contains measures 7 through 13. The musical notation continues with similar rhythmic patterns. The lyrics are 'Ba da ba da da__ da' repeated three times.

14

oo

Detailed description: This block contains measures 14 through 16. It features a long, sustained note on the word 'oo' with a fermata, set against a background of chords. The key signature remains three flats.

17

Ba da ba da da__ da da__ da__

Detailed description: This block contains measures 17 through 21. The melody continues with eighth and quarter notes. The lyrics are 'Ba da ba da da__ da da__ da__'.

22

Amy Jo
Tamara

Mon - day Mon - day, _____ can't trust__ that day, _____

Detailed description: This block contains measures 22 through 25. The melody is more active, featuring eighth and quarter notes. The lyrics are 'Mon - day Mon - day, _____ can't trust__ that day, _____'.

26

— Mon-day Mon - day, some-times it just turns out that way_____

Detailed description: This block contains measures 26 through 29. The melody continues with eighth and quarter notes. The lyrics are '— Mon-day Mon - day, some-times it just turns out that way_____'.

30

oo

Detailed description: This block contains measures 30 through 33. It features a long, sustained note on the word 'oo' with a fermata, set against a background of chords. The key signature remains three flats.

34

Amy Jo
Tamara
Erin

Oh Monday Mon - day, how you could leave _____ and not take me. _____

Detailed description: This block contains measures 34 through 40. The melody is more active, featuring eighth and quarter notes. The lyrics are 'Oh Monday Mon - day, how you could leave _____ and not take me. _____'.

AJ
Ev'-ry oth-er day, Ev'-ry oth-er day of the week is

Tam
Ev'-ry oth-er day, Ev'-ry oth-er day of the week is

Er
39 Ev'-ry oth-er day, ev'-ry oth-er day, Ev'-ry oth-er day of the week is

AJ
fine, yeah But whenever Monday comes,

Tam
fine, yeah But whenever Monday comes,

Er
41 fine, yeah But whenever Monday comes, but

AJ
— You can find me cry-in' all of the time —

Tam
— You can find me cry-in' all of the time —

Er
44 — when-ev-er Mon-day comes — You can find me cry-in' all of the time —

Amy Jo
Tamara
Erin

47 Ba da ba da da — da Ba da ba da da — da Ba da ba da da — da —

AJ

Tam

Er

70

Ba da ba da da da Ba da ba da da da Ba da ba da da da

74

Ba da ba da da da Ba da ba da da da Ba da ba da da da

80

Ba da ba da da da Ba da ba da da da

86

California Dreamin'

Amy Jo
Erin
Shawn

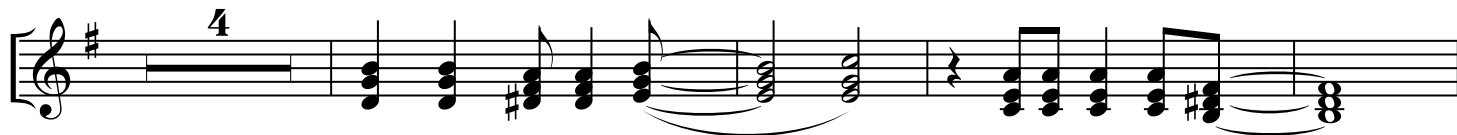
4

91 All the leaves are brown And the sky is gray

99 I've been for a walk On a win-ter's day

103 I'd be safe and warm If I was in L A

107 Cal - i - for - nia dream - in' On such a win-ter's day



111 got down on my knees _____ I be-gan to pray _____



119 preach - er likes the cold _____ knows I'm gon - na stay _____



123 Cal - i - for - nia dream - in' On such a win - ter's day _____



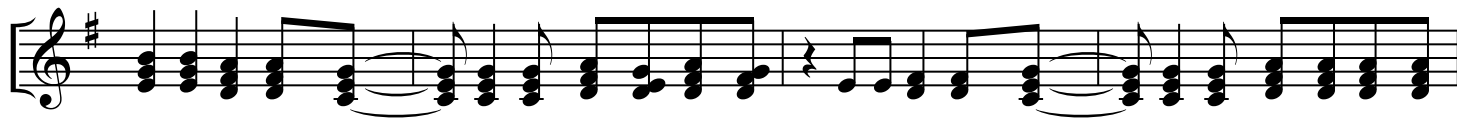
143 All the leaves are brown _____ And the sky is gray _____



147 I've been for a walk _____ On a win - ter's day _____



151 I'd be safe and warm _____ If I was L A _____



155 Cal - i - for - nia dream - in' On such a win - ter's Cal - i - for - nia dream - in' On such a win - ter's



159 Cal - i - for - nia dream - in' On such a win - ter's day _____

6 Dream A Little Dream
Easy Swing ♩ = 90

Mamas & Papas Medley

Tam
Er
Sh

164

Tam
Er
Sh

187

Tamara
Erin
Shawn

192

ba da da__ ba da da

Tam
Er
Sh

209

Tam
Er
Sh

215

Tam
Er
Sh

216

Dancing In The Street

Motown ♩ = 125

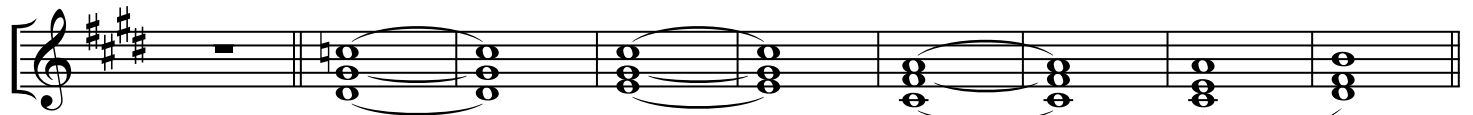
Amy Jo
Tamara
Shawn

232 danc-ing in the street danc-ing in the street

247 danc - ing in the street

250 sweet sweet sweet sweet mu - sic, mu - sic

253 ever - y - where oo oo



257 ah ah ah ah



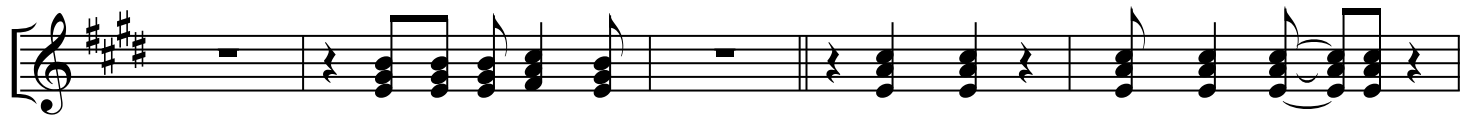
266 danc - ing in the street danc - ing in the street



269 oo oo



276 danc-ing in the street danc-ing in the street danc-ing in the street



281 danc-ing in the street sweet sweet sweet sweet mu - sic,



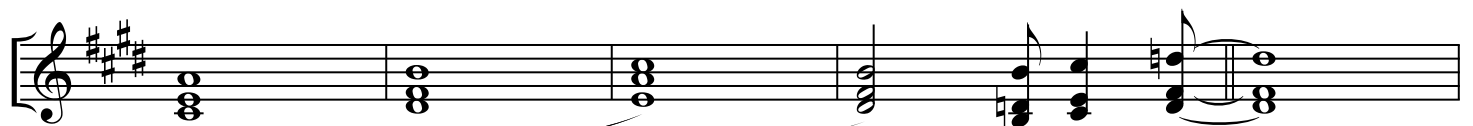
286 mu - sic ever - y - where oo



289 oo



292 ah ah ah



298 ah oo

303 oo _____ danc-ing in the street oo _____

This musical staff is in treble clef with a key signature of three sharps (F#, C#, G#). It contains a series of chords and melodic lines. The lyrics 'danc-ing in the street' are positioned below the staff, with 'oo' and a horizontal line preceding and following the main phrase.

306 — oo _____ danc-ing in the street oo _____

This musical staff continues the melody from the previous measure. It features similar chordal textures and melodic movement. The lyrics 'danc-ing in the street' are centered under the staff, flanked by 'oo' and horizontal lines.

310 — oo _____ danc - ing in the street

This musical staff shows further development of the musical theme. The lyrics 'danc - ing in the street' are placed below the staff, with 'oo' and a horizontal line at the beginning.

313 oo _____ oo _____ danc-ing in the street

This musical staff includes two 'oo' phrases with horizontal lines, followed by the lyrics 'danc-ing in the street'.

317 ah ah _____ danc-ing in the street

This musical staff concludes the sequence with the lyrics 'ah ah' followed by a horizontal line, and then 'danc-ing in the street'.