

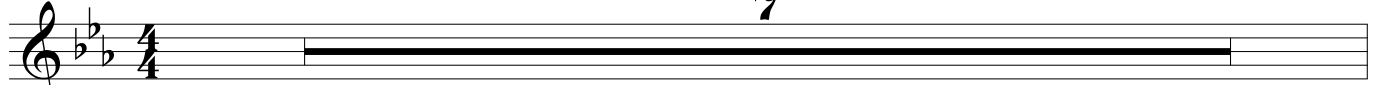
Piano, Guitars, Synth

Synth: Rock Organ GM 019

# Operator

Freely

7



Swing ♩ = 120  $\text{♩} = \text{♩}^{\text{3}}$

8 "one, two, three..." E<sup>b</sup> A<sup>b</sup> E<sup>b</sup>

A musical staff in 4/4 time with a key signature of two flats. It begins with a 4-measure rest, followed by a dynamic marking of *mf*. The rest of the staff is filled with a rhythmic pattern of diagonal slashes, representing a continuous accompaniment.

13 B<sup>b</sup> F7 B<sup>b</sup><sub>sus</sub> B<sup>b</sup>

A musical staff in 4/4 time with a key signature of two flats, containing four measures of rhythmic accompaniment represented by diagonal slashes.

17 E<sup>b</sup> A<sup>b</sup> E<sup>b</sup> A<sup>b</sup> A<sup>b</sup><sub>m7</sub>

A musical staff in 4/4 time with a key signature of two flats, containing four measures of rhythmic accompaniment represented by diagonal slashes.

21 E<sup>b</sup> A<sup>b</sup> F<sub>m7</sub> A<sup>b</sup>/B<sup>b</sup> E<sup>b</sup> A<sup>b</sup>/B<sup>b</sup>

A musical staff in 4/4 time with a key signature of two flats, containing four measures of rhythmic accompaniment represented by diagonal slashes.

25 E<sup>b</sup> A<sup>b</sup> E<sup>b</sup>

A musical staff in 4/4 time with a key signature of two flats, containing four measures of rhythmic accompaniment represented by diagonal slashes.

29 B<sup>b</sup> F7 B<sup>b</sup><sub>sus</sub> B<sup>b</sup>

A musical staff in 4/4 time with a key signature of two flats, containing four measures of rhythmic accompaniment represented by diagonal slashes.

33 E<sup>b</sup> A<sup>b</sup> A<sup>b</sup><sub>m7</sub>

A musical staff in 4/4 time with a key signature of two flats, containing four measures of rhythmic accompaniment represented by diagonal slashes.

37 E<sup>b</sup> A<sup>b</sup> F<sub>m7</sub> A<sup>b</sup>/B<sup>b</sup> E<sup>b</sup> A<sup>b</sup>/B<sup>b</sup>

A musical staff in 4/4 time with a key signature of two flats, containing four measures of rhythmic accompaniment represented by diagonal slashes.

Operator

41 Eb Ab Eb

45 Bb F7 Bbsus Bb

49 Eb Ab Abm7

53 Eb Ab Fm7 Ab/Bb Eb Ab/Bb

57 Eb Ab Eb

61 Bb F Bbsus Bb

65 Eb Ab Eb Ab Abm7

69 Eb Ab Fm7 Ab/Bb Eb

73 Ab Fm7 Ab/Bb Eb Ab Fm7 Ab/Bb Ab Eb

*rit.*